

# Monoclonal Anti-C11D5.3 scFv Antibody, Mouse IgG1 (3G8C1) (MALS verified)

Catalog # C13-MY2010b



## Source

Monoclonal Anti-C11D5.3 scFv Antibody, Mouse IgG1 (3G8C1) is a Mouse monoclonal antibody recombinantly expressed from HEK293 cells.

## Clone

3G8C1

## Species

Mouse

## Isotype

Mouse IgG1 | Mouse kappa

## Antibody Type

Recombinant Monoclonal

## Reactivity

Mouse

## Immunogen

Recombinant Mouse C11D5.3 scFv derived from HEK293 cells.

## Specificity

Specifically recognizes the antigen-recognition domain of C11D5.3 derived CARs.

## Application

Application	Recommended Usage
ELISA	0.2-250 ng/mL

## Purity

>95% as determined by SDS-PAGE.

>90% as determined by SEC-MALS.

## Purification

Protein A purified / Protein G purified

## Formulation

Supplied as 0.2  $\mu$ m filtered solution in PBS, pH7.4 with trehalose as protectant.

Contact us for customized product form or formulation.

## Shipping

*This product is supplied and shipped with dry ice, please inquire the shipping cost.*

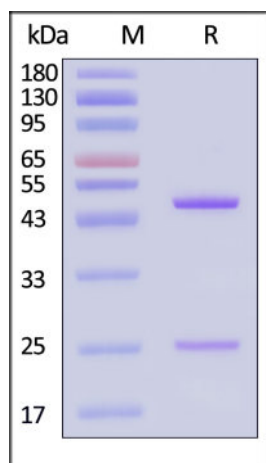
## Storage

*Please avoid repeated freeze-thaw cycles.*

This product is stable after storage at:

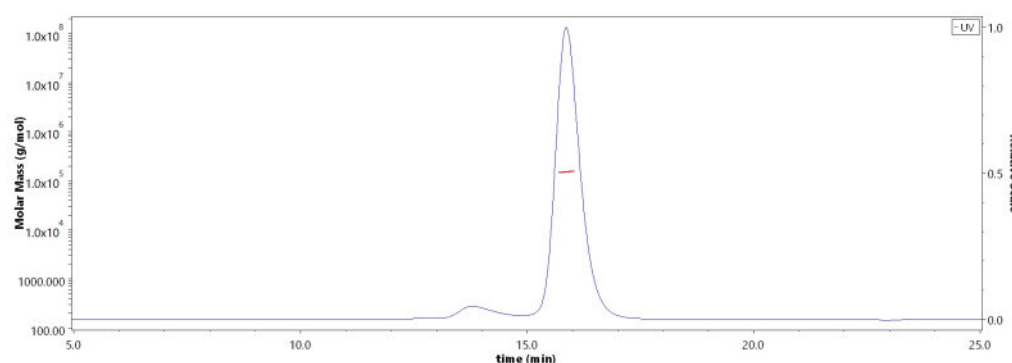
- The product MUST be stored at  $-70^{\circ}\text{C}$  or lower upon receipt;
- $-70^{\circ}\text{C}$  for 3 months under sterile conditions.

## SDS-PAGE



Monoclonal Anti-C11D5.3 scFv Antibody, Mouse IgG1 (3G8C1) on SDS-PAGE under reducing (R) condition. The gel was stained with Coomassie Blue.

## SEC-MALS



The purity of Monoclonal Anti-C11D5.3 scFv Antibody, Mouse IgG1 (3G8C1) (Cat. No. C13-MY2010b) is more than 90% and the molecular weight of this

Discounts, Gifts,  
and more!



# Monoclonal Anti-C11D5.3 scFv Antibody, Mouse IgG1 (3G8C1) (MALS verified)

Catalog # C13-MY2010b

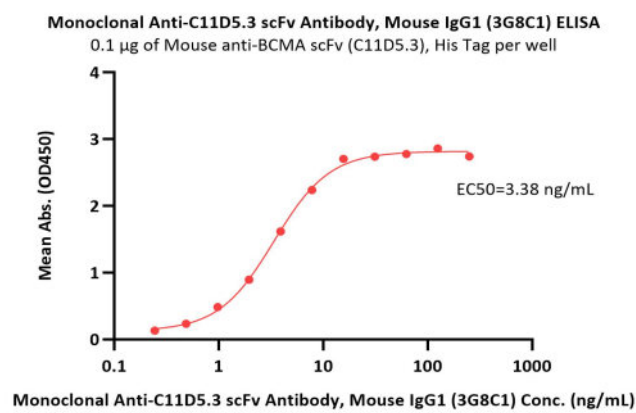


BIOSYSTEMS  
**Acro**

The purity of the protein is greater than 95% (With [Star Ribbon Pre-stained Protein Marker](#)).

protein is around 135-165 kDa verified by SEC-MALS. [Report](#)

## Bioactivity-ELISA



Immobilized Mouse anti-BCMA scFv (C11D5.3), His Tag at 1 µg/mL (100 µL/well) can bind Monoclonal Anti-C11D5.3 scFv Antibody, Mouse IgG1 (3G8C1) (Cat. No. C13-MY2010b) with a linear range of 0.2-8 ng/mL (QC tested).

## Background

C11D5.3 is an IgG1 mouse monoclonal antibody specific for BCMA, which is a target for the immunotherapy of multiple myeloma and lymphomas. C11D5.3 scFv is the most commonly used ectodomain component of BCMA-specific CARs. So far, multiple reported CART BCMA trials contain the anti-BCMA scFv derived from C11D5.3, such as FDA approved CARs Abecma.

## Clinical and Translational Updates

Discounts, Gifts,  
and more!



[www.acrobiosystems.com](http://www.acrobiosystems.com)

2/10/2025