



## Synonym

CC chemokine receptor 8,CD198,ChemR1,CKRL1,CKR-L1,CKRL1,CY6,GPRCL1,GPRCY6,GPR-CY6,TER-1

## Source

Biotinylated Human CCR8 Protein, His,Flag Tag&Avitag (CC8-H82D3) is expressed from human 293 cells (HEK293). It is a membrane protein, contains complete wild type 7-transmembrane domains (TMD) and extracellular domain (ECD).

## Molecular Characterization

This protein carries a polyhistidine tag at the C-terminus and a Flag tag at the C-terminus followed by an Avi tag (Avitag™). The protein has a calculated MW of 60.5 kDa.

## Labeling

*Biotinylation of this product is performed using Avitag™ technology. Briefly, the single lysine residue in the Avitag is enzymatically labeled with biotin.*

## Protein Ratio

Passed as determined by the HABA assay / binding ELISA.

## Endotoxin

Less than 1.0 EU per µg by the LAL method.

## Purity

>90% as determined by SDS-PAGE.

## Formulation

*This product is not suitable for cell based experiments due to cytotoxicity of detergent.*

*Detergent buffer is INDISPENSABLE to keep membrane protein soluble and active, under no circumstance should you remove detergent.*

*Detergent buffer is sold separately and not included in protein, and please contact us if you need the buffer.*

*If glycerol is not compatible to your application, remove glycerol just before immediate experiment, and NEVER store glycerol-free protein solution.*

Supplied as 0.2 µm filtered solution in 50 mM HEPES, 150 mM NaCl, CHS, pH7.5 with glycerol as protectant.

Contact us for customized product form or formulation.

## Shipping

*This product is supplied and shipped with dry ice, please inquire the shipping cost.*

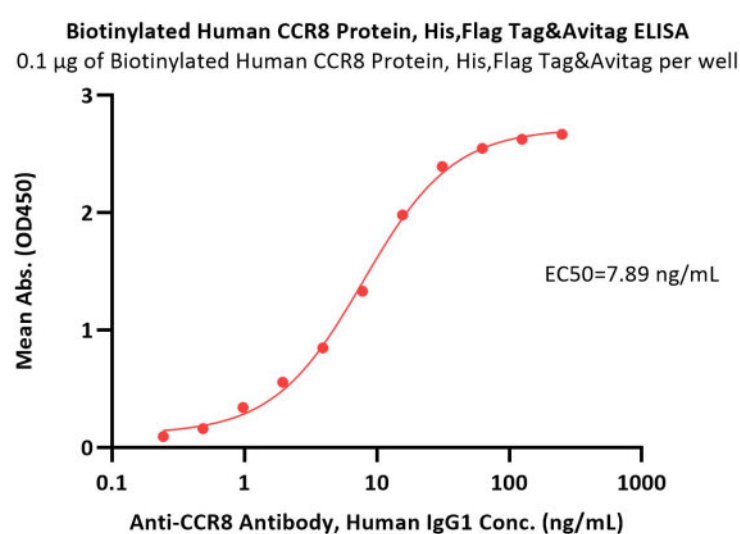
## Storage

*Please avoid repeated freeze-thaw cycles.*

This product is stable after storage at:

- The product MUST be stored at -70°C or lower upon receipt;
- -70°C for 3 months under sterile conditions.

## Bioactivity-ELISA



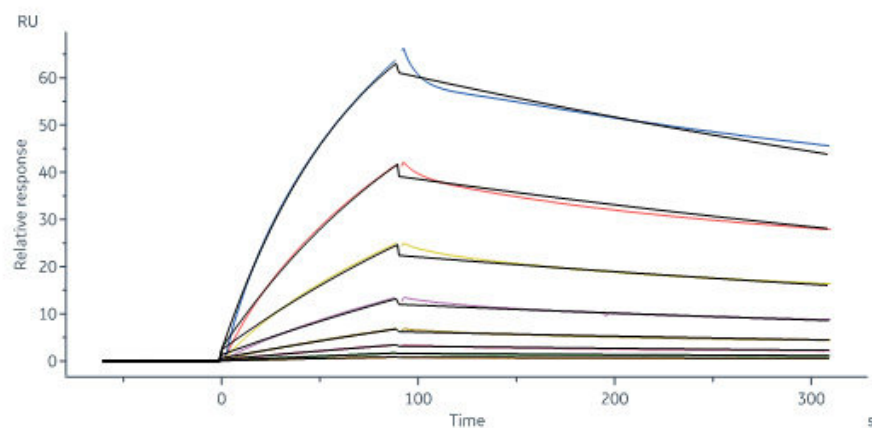
Immobilized Biotinylated Human CCR8 Protein, His,Flag Tag&Avitag (Cat. No. CC8-H82D3) at 1 µg/mL (100 µL/well) on streptavidin (Cat. No. STN-N5116) precoated (0.5 µg/well) plate can bind Anti-CCR8 Antibody, Human IgG1 with a linear range of 0.2-31 ng/mL (QC tested).

Discounts, Gifts,  
and more!





## Bioactivity-SPR



Anti-CCR8 Antibody, Human IgG1 captured on Protein A Chip can bind Biotinylated Human CCR8 Protein, His,Flag Tag&Avitag (Cat. No. CC8-H82D3) with an affinity constant of 115 nM as determined in a SPR assay (in presence of DDM and CHS) (Biacore 8K) (Routinely tested).

## Background

This entry represents CC chemokine receptor 8 (CCR8), which it is expressed predominantly in lymphoid tissues and has also been found in glomerular podocytes and human umbilical vein endothelial cells (HUVECs). CCR8 is associated with Th2 lymphocytes, which are critical for allergy, and has a role in lymphocyte activation, migration, proliferation and differentiation and in allergic diseases. CCR8 binds to CCL1 (also known as I-309) and to CCL16 (also known as liver expressed chemokine). It also exhibits a high affinity for three chemokines of viral origin: vMIP-I, vMIP-II and vMCC-I.

## Clinical and Translational Updates

Discounts, Gifts,  
and more!

