



Synonym

PECAM1,CD31,FLJ34100,FLJ58394

Source

Human CD31, Fc Tag(CD1-H5258) is expressed from human 293 cells (HEK293). It contains AA Gln 28 - Lys 601 (Accession # [AAH22512.1](#)).
 Predicted N-terminus: Gln 28

Molecular Characterization

CD31(Gln 28 - Lys 601) AAH22512.1	Fc(Pro 100 - Lys 330) P01857
--------------------------------------	---------------------------------

This protein carries a human IgG1 Fc tag at the C-terminus.

The protein has a calculated MW of 90.6 kDa. The protein migrates as 120-140 kDa when calibrated against [Star Ribbon Pre-stained Protein Marker](#) under reducing (R) condition (SDS-PAGE) due to glycosylation.

Endotoxin

Less than 1.0 EU per µg by the LAL method.

Purity

>95% as determined by SDS-PAGE.

Formulation

Lyophilized from 0.22 µm filtered solution in Tris with Glycine, Arginine and NaCl, pH7.5 with trehalose as protectant.

Contact us for customized product form or formulation.

Reconstitution

Please see Certificate of Analysis for specific instructions.

For best performance, we strongly recommend you to follow the reconstitution protocol provided in the CoA.

Storage

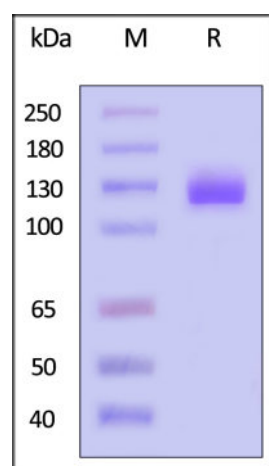
For long term storage, the product should be stored at lyophilized state at -20°C or lower.

Please avoid repeated freeze-thaw cycles.

This product is stable after storage at:

- -20°C to -70°C for 12 months in lyophilized state;
- -70°C for 3 months under sterile conditions after reconstitution.

SDS-PAGE



Human CD31, Fc Tag on SDS-PAGE under reducing (R) condition. The gel was stained with Coomassie Blue. The purity of the protein is greater than 95% (With [Star Ribbon Pre-stained Protein Marker](#)).

Background

Cluster of Differentiation 31 (CD31) is also known as Platelet endothelial cell adhesion molecule (PECAM-1), is a 130-kDa transmembrane glycoprotein expressed by endothelial cells, platelets, macrophages and Kupffer cells, granulocytes, T / NK cells, lymphocytes, megakaryocytes, osteoclasts, neutrophils, certain tumors, and is the only known member of the CAM family on platelets. CD31 is found on the surface of platelets, monocytes, neutrophils, and some types of T-cells, and makes up a large portion of endothelial cell intercellular junctions. The encoded protein is a member of the immunoglobulin superfamily and is likely involved in leukocyte

Discounts, Gifts,
and more!



Human CD31 / PECAM-1 Protein, Fc Tag

Catalog # CD1-H5258



BIOSYSTEMS
Acro

migration, angiogenesis, and integrin activation. CD31 plays a key role in removing aged neutrophils from the body. CD31 mediates the homotypic or heterotypic cell adhesion by binding to itself or the leukocyte integrin $\alpha v \beta 3$, and thus plays a role in neutrophil recruitment in inflammatory responses, transendothelial migration of leukocytes, as well as in cardiovascular development. In addition, it has been shown that CD31 expression is up-regulated by LPS stimulation, and might function as a feedback negative regulator of LPS inflammatory response in macrophages.

Clinical and Translational Updates

Discounts, Gifts,
and more!



➤ www.acrobiosystems.com

10/31/2024