



**Synonym**

CD4,CD4mut,LEU3

**Source**

Rhesus macaque CD4, Fc Tag(CD4-C5256) is expressed from human 293 cells (HEK293). It contains AA Lys 26 - Trp 390 (Accession # [G7N5T8](#)).

Predicted N-terminus: Lys 26

**Molecular Characterization**

CD4(Lys 26 - Trp 390) G7N5T8	Fc(Pro 100 - Lys 330) P01857
---------------------------------	---------------------------------

This protein carries a human IgG1 Fc tag at the C-terminus.

The protein has a calculated MW of 67.0 kDa. The protein migrates as 67-85 kDa under reducing (R) condition (SDS-PAGE) due to glycosylation.

**Endotoxin**

Less than 1.0 EU per µg by the LAL method.

**Purity**

>95% as determined by SDS-PAGE.

>90% as determined by SEC-MALS.

**Formulation**

Lyophilized from 0.22 µm filtered solution in Tris with Glycine, Arginine and NaCl, pH7.5 with trehalose as protectant.

Contact us for customized product form or formulation.

**Reconstitution**

Please see Certificate of Analysis for specific instructions.

*For best performance, we strongly recommend you to follow the reconstitution protocol provided in the CoA.*

**Storage**

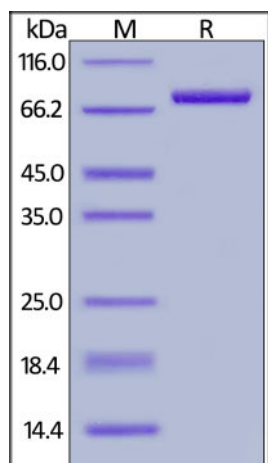
For long term storage, the product should be stored at lyophilized state at -20°C or lower.

*Please avoid repeated freeze-thaw cycles.*

This product is stable after storage at:

- -20°C to -70°C for 12 months in lyophilized state;
- -70°C for 3 months under sterile conditions after reconstitution.

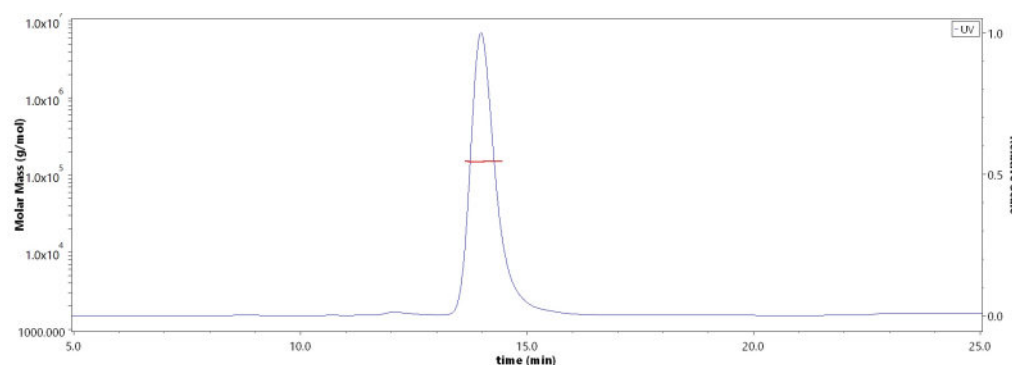
**SDS-PAGE**



Rhesus macaque CD4, Fc Tag on SDS-PAGE under reducing (R) condition. The gel was stained with Coomassie Blue. The purity of the protein is greater than 95%.

**Bioactivity-ELISA**

**SEC-MALS**

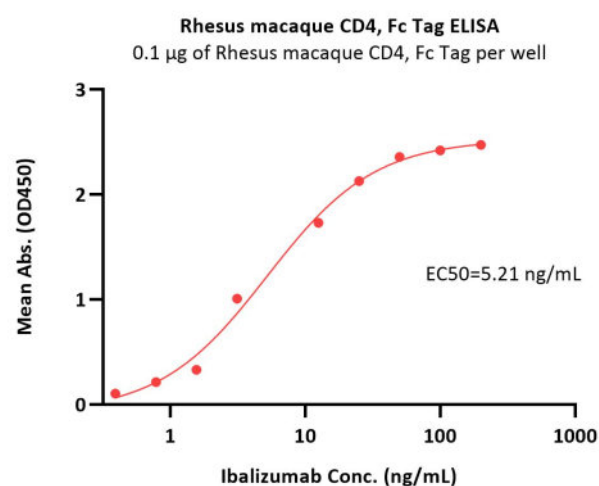


The purity of Rhesus macaque CD4, Fc Tag (Cat. No. CD4-C5256) is more than 90% and the molecular weight of this protein is around 145-155 kDa verified by SEC-MALS.

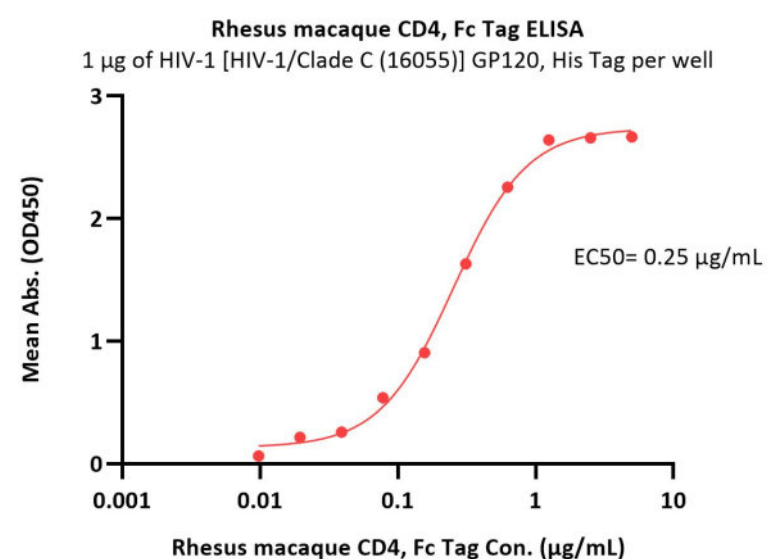
[Report](#)

Discounts, Gifts,  
and more!





Immobilized Rhesus macaque CD4, Fc Tag (Cat. No. CD4-C5256) at 1 µg/mL (100 µL/well) can bind Ibalizumab with a linear range of 0.4-25 ng/mL (QC tested).



Immobilized HIV-1 [HIV-1/Clade C (16055)] GP120, His Tag (Cat. No. GP5-V15224) at 10 µg/mL (100 µL/well) can bind Rhesus macaque CD4, Fc Tag (Cat. No. CD4-C5256) with a linear range of 0.04-0.31 µg/mL (Routinely tested).

## Background

T-cell surface glycoprotein CD4 is also known as T-cell surface antigen T4/Leu-3. CD4 contains three Ig-like C2-type (immunoglobulin-like) domains and one Ig-like V-type (immunoglobulin-like) domain. CD4 is accessory protein for MHC class-II antigen/T-cell receptor interaction. CD4 induces the aggregation of lipid rafts. CD4 is a primary receptor used by HIV-1 to gain entry into host T cells. HIV infection leads to a progressive reduction of the number of T cells possessing CD4 receptors. Therefore, medical professionals refer to the CD4 count to decide when to begin treatment for HIV-infected patients.

## Clinical and Translational Updates

Discounts, Gifts,  
and more!

