



### Synonym

MMR,CD206,hMR,MRC1,CLEC13D,CLEC13DL,MRC1L1

### Source

Human CD206, His Tag(CD6-H52H9) is expressed from human 293 cells (HEK293). It contains AA Leu 19 - Ala 1389 (Accession # [P22897-1](#)).

Predicted N-terminus: Leu 19

### Molecular Characterization

CD206(Leu 19 - Ala 1389) P22897-1	Poly-his
--------------------------------------	----------

This protein carries a polyhistidine tag at the C-terminus.

The protein has a calculated MW of 158.6 kDa. The protein migrates as 150-190 kDa when calibrated against [Star Ribbon Pre-stained Protein Marker](#) under reducing (R) condition (SDS-PAGE) due to glycosylation.

### Endotoxin

Less than 1.0 EU per µg by the LAL method.

### Purity

>90% as determined by SDS-PAGE.

>90% as determined by SEC-HPLC.

### Formulation

Lyophilized from 0.22 µm filtered solution in PBS, pH7.4 with trehalose as protectant.

Contact us for customized product form or formulation.

### Reconstitution

Please see Certificate of Analysis for specific instructions.

*For best performance, we strongly recommend you to follow the reconstitution protocol provided in the CoA.*

### Storage

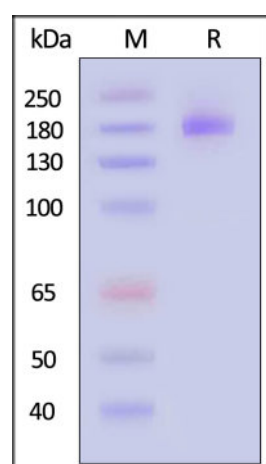
For long term storage, the product should be stored at lyophilized state at -20°C or lower.

*Please avoid repeated freeze-thaw cycles.*

This product is stable after storage at:

- -20°C to -70°C for 12 months in lyophilized state;
- -70°C for 3 months under sterile conditions after reconstitution.

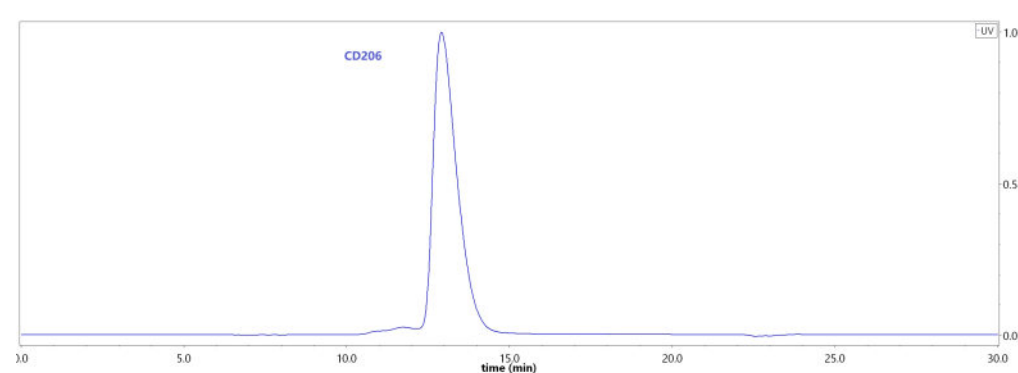
### SDS-PAGE



Human CD206, His Tag on SDS-PAGE under reducing (R) condition. The gel was stained with Coomassie Blue. The purity of the protein is greater than 90% (With [Star Ribbon Pre-stained Protein Marker](#)).

### Bioactivity-ELISA

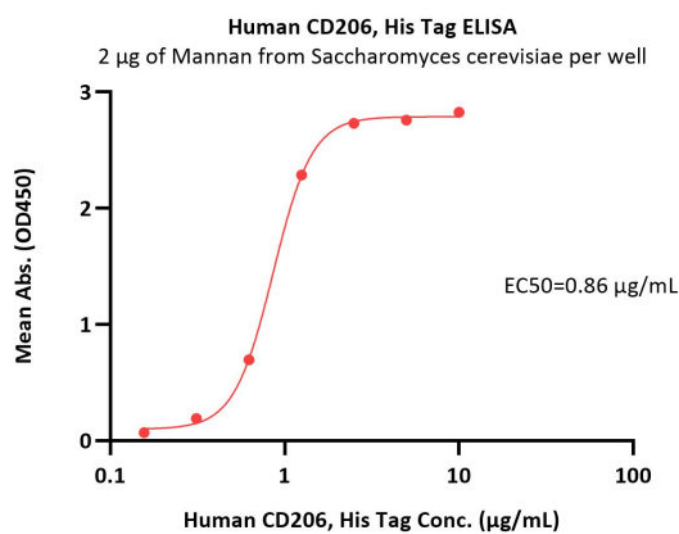
### SEC-HPLC



The purity of Human CD206, His Tag (Cat. No. CD6-H52H9) was greater than 90% as determined by SEC-HPLC.

Discounts, Gifts,  
and more!





Immobilized Mannan from *Saccharomyces cerevisiae* at 20 µg/mL (100 µL/well) can bind Human CD206, His Tag (Cat. No. CD6-H52H9) with a linear range of 0.156-2.5 µg/mL (QC tested).

## Background

Mrc1 is a conserved checkpoint mediator protein that transduces the replication stress signal to the downstream effector kinase. Mrc1 and its vertebrate homologue Claspin serve as a mediator for replication stress checkpoint signaling, receiving the signal from Mec1/Rad3/ATR sensor kinase and transmitting it to the effector Rad53/Cds1/Chk1 kinase. The loss of *mrc1* checkpoint activity results in the aberrant activation of late/dormant origins in the presence of hydroxyurea. Tumor-associated macrophages (TAMs) expressing the multi-ligand endocytic receptor mannose receptor (CD206/MRC1) contribute to tumor immunosuppression, angiogenesis, metastasis, and relapse.

## Clinical and Translational Updates

Discounts, Gifts,  
and more!

