



Synonym

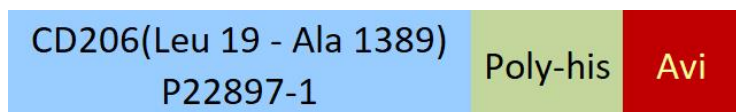
MMR,CD206,hMR,MRC1,CLEC13D,CLEC13DL,MRC1L1

Source

Biotinylated Human CD206 Protein, His,Avitag(CD6-H82E4) is expressed from human 293 cells (HEK293). It contains AA Leu 19 - Ala 1389 (Accession # [P22897-1](#)).

Predicted N-terminus: Leu 19

Molecular Characterization



This protein carries a polyhistidine tag at the C-terminus, followed by an Avi tag (Avitag™).

The protein has a calculated MW of 160.3 kDa. The protein migrates as 130-180 kDa when calibrated against [Star Ribbon Pre-stained Protein Marker](#) under reducing (R) condition (SDS-PAGE) due to glycosylation.

Labeling

Biotinylation of this product is performed using Avitag™ technology. Briefly, the single lysine residue in the Avitag is enzymatically labeled with biotin.

Protein Ratio

Passed as determined by the HABA assay / binding ELISA.

Endotoxin

Less than 1.0 EU per µg by the LAL method.

Purity

>90% as determined by SDS-PAGE.

Formulation

Lyophilized from 0.22 µm filtered solution in PBS, pH7.4 with trehalose as protectant.

Contact us for customized product form or formulation.

Reconstitution

Please see Certificate of Analysis for specific instructions.

For best performance, we strongly recommend you to follow the reconstitution protocol provided in the CoA.

Storage

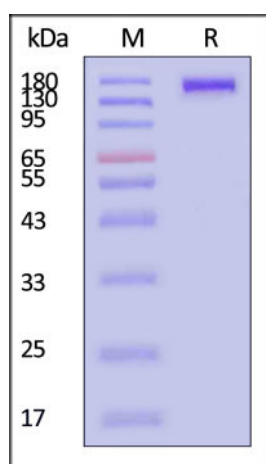
For long term storage, the product should be stored at lyophilized state at -20°C or lower.

Please avoid repeated freeze-thaw cycles.

This product is stable after storage at:

- -20°C to -70°C for 12 months in lyophilized state;
- -70°C for 3 months under sterile conditions after reconstitution.

SDS-PAGE

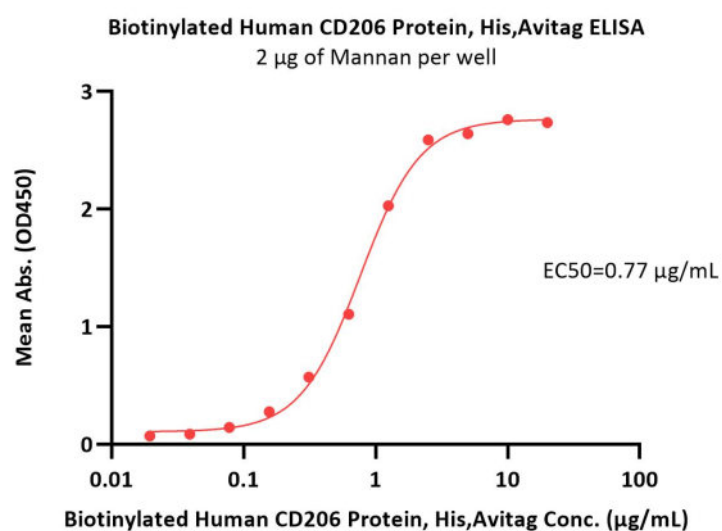


Biotinylated Human CD206 Protein, His,Avitag on SDS-PAGE under reducing (R) condition. The gel was stained with Coomassie Blue. The purity of the protein is greater than 90% (With [Star Ribbon Pre-stained Protein Marker](#)).

Bioactivity-ELISA

Discounts, Gifts,
and more!





Immobilized Mannan at 20 µg/mL (100 µL/well) can bind Biotinylated Human CD206 Protein, His,Avitag (Cat. No. CD6-H82E4) with a linear range of 0.02-1.25 µg/mL (QC tested).

Background

Mrc1 is a conserved checkpoint mediator protein that transduces the replication stress signal to the downstream effector kinase. Mrc1 and its vertebrate homologue Claspin serve as a mediator for replication stress checkpoint signaling, receiving the signal from Mec1/Rad3/ATR sensor kinase and transmitting it to the effector Rad53/Cds1/Chk1 kinase. The loss of mrc1 checkpoint activity results in the aberrant activation of late/dormant origins in the presence of hydroxyurea. Tumor-associated macrophages (TAMs) expressing the multi-ligand endocytic receptor mannose receptor (CD206/MRC1) contribute to tumor immunosuppression, angiogenesis, metastasis, and relapse.

Clinical and Translational Updates

Discounts, Gifts,
and more!

