



Source

Anti-Cetuximab Antibody (12B1E9) is a Mouse monoclonal antibody recombinantly expressed from HEK293 cells.

Clone

12B1E9

Species

Mouse

Isotype

Mouse IgG1 | Kappa

Conjugate

Unconjugated

Antibody Type

Recombinant Monoclonal

Reactivity

Human

Immunogen

Cetuximab.

Specificity

Recognizes Cetuximab specifically.

Application

Application	Recommended Usage
ELISA	0.2-15 ng/mL

Purity

>90% as determined by SDS-PAGE.

>90% as determined by SEC-MALS.

Purification

Protein A purified/ Protein G purified

Formulation

Lyophilized from 0.22 µm filtered solution in 50 mM Tris, 100 mM Glycine, 25 mM Arginine, 150 mM NaCl, pH7.5 with trehalose as protectant.

Contact us for customized product form or formulation.

Reconstitution

Please see Certificate of Analysis for specific instructions.

For best performance, we strongly recommend you to follow the reconstitution protocol provided in the CoA.

Storage

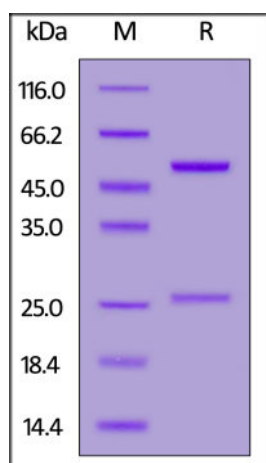
For long term storage, the product should be stored at lyophilized state at -20°C or lower.

Please avoid repeated freeze-thaw cycles.

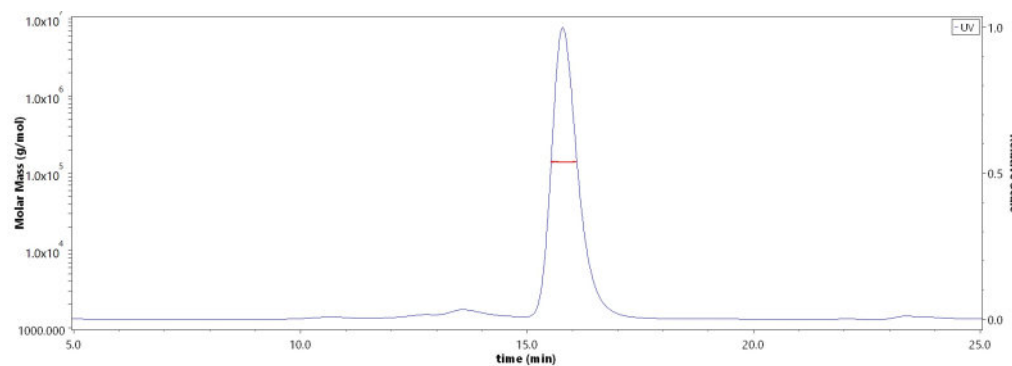
This product is stable after storage at:

- -20°C to -70°C for 12 months in lyophilized state;
- -70°C for 3 months under sterile conditions after reconstitution.

SDS-PAGE



SEC-MALS



Discounts, Gifts,
and more!



Anti-Cetuximab Antibody (12B1E9) (recommended for PK/PD, MALS verified)

Catalog # CEB-Y29c



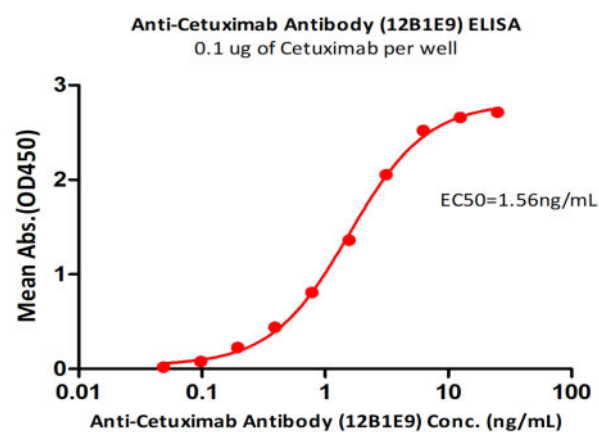
BIOSYSTEMS
Acro

Anti-Cetuximab Antibody (12B1E9) on SDS-PAGE under reducing (R) condition. The gel was stained with Coomassie Blue. The purity of the protein is greater than 90%.

The purity of Anti-Cetuximab Antibody (12B1E9) (Cat. No. CEB-Y29c) is more than 90% and the molecular weight of this protein is around 130-160 kDa verified by SEC-MALS.

[Report](#)

Bioactivity-ELISA



Immobilized Cetuximab at 1 $\mu\text{g/mL}$ (100 $\mu\text{L/well}$) can bind Anti-Cetuximab Antibody (12B1E9) (Cat. No. CEB-Y29c) with a linear range of 0.2-1.6 ng/mL (QC tested).

Background

Cetuximab is an epidermal growth factor receptor binding FAB. Cetuximab is composed of the Fv (variable; antigen-binding) regions of the 225 murine EGFR monoclonal antibody specific for the N-terminal portion of human EGFR with human IgG1 heavy and kappa light chain constant (framework) regions.

Clinical and Translational Updates

Discounts, Gifts,
and more!

