

HEK293/Membrane-Bound Human TL1A Stable Cell Line Data Sheet

➤ *Limited Use & License Disclosure*

BY USE OF THIS PRODUCT, RESEARCHER AGREES TO BE BOUND BY THE FOLLOWING TERMS OF LIMITED USE OF THIS CELL LINE PRODUCT.

- If the researcher is not willing to accept the terms of limited use of this cell line product, and the product is unused, ACRO will accept return of the unused product.
- Researchers may use this product for research use only, no commercial use is allowed.
"Commercial use" means any and all uses of this product and derivatives by a party for profit or other consideration and may include but is not limited to use in: (1) product manufacture; and (2) to provide a service, information or data; and/or resale of the product or its derivatives, whether or not such product or derivatives are resold for use in research.
- This cell line is neither intended for any animal or human therapeutic purposes nor for any direct human in vivo use. You have no right to share, modify, transfer, distribute, sell, sublicense, or otherwise make the cell line available for use to other researchers, laboratories, research institutions, hospitals, universities, or service organizations.
- ACROBIOSYSTEMS MAKES NO WARRANTIES OR REPRESENTATIONS OF ANY KIND, EITHER EXPRESSED OR IMPLIED, WITH RESPECT TO THE SUITABILITY OF THE CELL LINE FOR ANY PARTICULAR USE.
- ACROBIOSYSTEMS ACCEPTS NO LIABILITY IN CONNECTION WITH THE HANDLING OR USE OF THE CELL LINE.
- Modifications of the cell line, transfer to a third party, or commercial use of the cell line may require a separate license and additional fees. Please contact order.cn@acrobiosystems.com for further details.

HEK293/Membrane-Bound Human TL1A Stable Cell Line Data Sheet

HEK293/Membrane-Bound Human TL1A Stable Cell Line

Catalog No.	Size
CHEK-ATP198	2 × (1 vial contains ~5×10 ⁶ cells)

• *Description*

The HEK293/Membrane-Bound Human TL1A Stable Cell Line was engineered to express the only membrane-bound human TL1A by deletion of the amino acids 66–94 in full-length human TL1A (Gene ID: 9966), which was in loss of detectable membrane-bound human TL1A in the supernatant. Surface expression of the membrane-bound TL1A was confirmed by flow cytometry.

• *Application*

- Useful for cell-based TL1A binding assay.

• *Cell Line Profile*

Cell line	HEK293/Membrane-Bound Human TL1A Stable Cell Line
Host Cell	HEK293
Property	Adherent
Complete Growth Medium	DMEM + 10% FBS
Selection Marker	Puromycin (2 µg/mL)
Incubation	37°C with 5% CO ₂
Doubling Time	22-24 hours
Transduction Technique	Lentivirus

HEK293/Membrane-Bound Human TL1A Stable Cell Line Data Sheet

• *Materials Required for Cell Culture*

- DMEM Medium (BasalMedia, Cat. No. L120KJ)

Note: If you are unable to obtain the specified DMEM medium (BasalMedia, Cat. No. L120KJ) in China, you may use an alternative DMEM medium (Gibco, Cat. No. 11965-092) or another suitable medium for culturing.

- Fetal bovine serum (CellMax, Cat. No. SA211.02)
- Puromycin (InvivoGen, Cat. No. ant-pr-5b)
- Hygromycin B (Invitrogen, Cat. No. 10687010)
- 0.25% Trypsin-EDTA (1X), Phenol Red (Gibco, Cat. No. 25200-056)
- Penicillin-Streptomycin (Gibco, Cat. No. 15140-122)
- Phosphate Buffered Saline (1X) (HyClone, Cat. No. SH30256.01)
- Complete Growth Medium: DMEM + 10% FBS, 1%P/S
- Culture Medium: DMEM + 10% FBS, Puromycin (2 µg/mL), Hygromycin B (20 µg/mL), 1%P/S
- Freeze Medium: 90% FBS, 10% (V/V) DMSO
- T-75 Culture flask (Corning, Cat. No. 430641)
- Cryogenic storage vials (SARSTEDT, Cat. No. 72.379.007)
- Thermostat water bath
- Centrifuge (Cence, Model: L550)
- Cell counter (MONWEI, Model: SmartCell200A Plus)
- CO₂ Incubator (Thermo, Model: 3111)
- Biological Safety Cabinet (Thermo, Model: 1389)

HEK293/Membrane-Bound Human TL1A Stable Cell Line Data Sheet

• *Recovery*

1. Thaw the vial by gentle agitation in a 37°C water bath. To reduce the possibility of contamination, keep the cap out of the water. Thawing should be rapid (approximately 2 minutes).
2. Remove the vial from the water bath as soon as the contents are thawed, and decontaminate by spraying with 70% ethanol. All the operations from this point on should be carried out under strict aseptic conditions.
3. Transfer the vial contents to a centrifuge tube containing 4.0 mL complete growth medium and spin at approximately 1000 rpm for 5 minutes.
4. Resuspend cell pellet with 5 mL **complete growth medium** and transfer the cell suspension into T-75 flask containing 10-15 mL of pre-warmed complete growth medium.
5. Incubate at 37°C with 5% CO₂ incubator until the cells are ready to be split.

• *Subculture*

1. Remove and discard culture medium.
2. Wash the cells once with sterile PBS.
3. Add 2 mL of 0.25% trypsin to cell culture flask. Place the flask at 37°C for 2-3 minutes, until 90% of the cells have detached.
4. Add 6.0 to 8.0 mL of **culture medium** and aspirate cells by gently pipetting.
5. Add appropriate aliquots of the cell suspension to new culture vessel.
6. Incubate at 37°C with 5% CO₂ incubator.

Subcultivation Ratio: A subcultivation ratio of 1:6 to 1:10 is recommended.

Medium Renewal: Every 2 to 3 days.

Note: After recovery for 1-2 generations with the complete growth medium not containing the selection marker, if the cell state is well, changing to the culture medium containing the selection marker.

HEK293/Membrane-Bound Human TL1A Stable Cell Line Data Sheet

• *Cryopreservation*

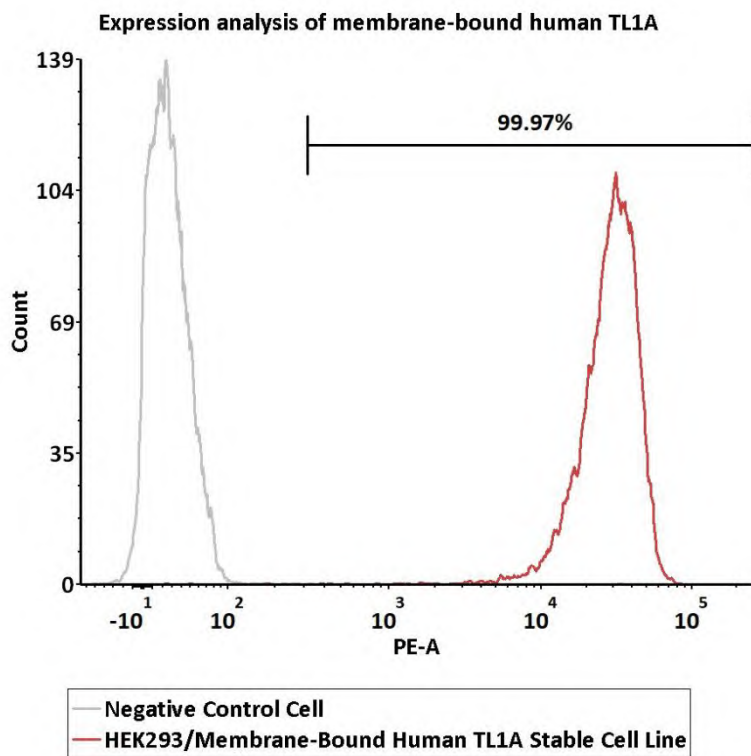
1. Remove and discard spent medium.
2. Detach cells from the cell culture flasks with 0.25% trypsin.
3. Centrifuge at 1000 rpm for 5 min at RT to pellet cells.
4. Resuspend the cell pellets with complete growth medium and count viable cells.
5. Centrifuge at 1000 rpm for 5 min at RT and resuspend cells in freezing medium to a concentration of 5×10^6 to 1×10^7 cells/mL.
6. Aliquot into cryogenic storage vials. Place vials in a programmable cooler or an insulated box placed in a -80°C freezer overnight, then transferring to liquid nitrogen storage.

• *Storage*

- **Product format:** Frozen
- **Storage conditions:** Liquid nitrogen immediately upon receipt

HEK293/Membrane-Bound Human TL1A Stable Cell Line Data Sheet

• *Receptor Assay*



Catalog No.	Stable Cell Line	MFI for membrane-bound human TL1A (PE)
NA	Negative Control Cell	21.85
CHEK-ATP198	HEK293/Membrane-Bound Human TL1A Stable Cell Line	28786.49

Fig1. Expression analysis of human TL1A on HEK293/Membrane-Bound Human TL1A Stable Cell Line by FACS. Cell surface staining was performed on HEK293/Membrane-Bound Human TL1A Stable Cell Line or negative control cell using anti-human TL1A antibody followed by staining with PE anti-human IgG Fc antibody.

HEK293/Membrane-Bound Human TL1A Stable Cell Line Data Sheet

<u>Products</u>	<u>Cat.No.</u>
Raji/Membrane-Bound Human TL1A Stable Cell Line Development Service	SCRAJ-STT204
HEK293/Human TL1A Stable Cell Line	CHEK-ATP142
Human DR3 (TL1A receptor) (Luc) Jurkat Reporter Cell Development Service	SCJUR-STF178
Human TSLP R (Luc) HEK293 Reporter Cell	CHEK-ATF045
STAT3 (Luc) HEK293 Reporter Cell	CHEK-ATF047
Human IL-5 R alpha/CD131 (Luc) HEK293 Reporter Cell	CHEK-ATF074
HEK293/Human OX40 / TNFRSF4 / CD134 Stable Cell Line	CHEK-ATP053
HEK293/Human OX40 Ligand / TNFSF4 Stable Cell Line	CHEK-ATP054
HEK293/Human FcRn (FCGRT & B2M) Stable Cell Line	CHEK-ATP079
Human IL-11 R alpha (Luc) HEK293 Reporter Cell	CHEK-ATF052
Human IL-4 R alpha/IL-13 R alpha 1 (Luc) HEK293 Reporter Cell	CHEK-ATF075
Human IL-21 R/CD132 (Luc) HEK293 Reporter Cell	CHEK-ATF051
Human IL-31 RA/OSMR (Luc) HEK293 Reporter Cell	CHEK-ATF094
Human IL-10 R alpha/IL-10 R beta (Luc) HEK293 Reporter Cell	CHEK-ATF095
Human CD40 (Luc) HEK293 Reporter Cell	CHEK-ATF097
Human IL-7 R alpha/CD132 (Luc) HEK293 Reporter Cell	CHEK-ATF099
NIH-3T3/Human IGF-1 R Stable Cell Line Development Service	CNIH-ATP102
Human HVEM (Luc) HEK293 Reporter Cell	CHEK-ATF105
Human BTLA (Luc) Jurkat Reporter Cell Development Service	SCJUR-STF106
Human IGF-1 R (Luc) HEK293 Reporter Cell	CHEK-ATF107
Raji/Human HVEM Stable Cell Line Development Service	SCRAJ-STF108
CHO/Human LIGHT Stable Cell Line Development Service	SCCHO-ATP109
CHO/Human BTLA Stable Cell Line Development Service	SCCHO-ATP110
CHO/Human TSHR Stable Cell Line Development Service	SCCHO-ATP085
CHO/Human LILRB4 Stable Cell Line Development Service	SCCHO-ATP087
Human GLP-2R (Luc) HEK293 Reporter Cell	CHEK-ATF128

HEK293/Membrane-Bound Human TL1A Stable Cell Line Data Sheet

<u>Products</u>	<u>Cat.No.</u>
Human RANK (Luc) HEK293 Reporter Cell	CHEK-ATF129
HEK293/FcRn (FCGRT & B2M), GFP Tag Stable Cell Line	CHEK-ATP132
HEK293/Human TSHR Stable Cell Line	CHEK-ATP086
HEK293/Human LILRB4 Stable Cell Line	CHEK-ATP088
Human IL-17 RA/IL-17 RC (Luc) HEK293 Reporter Cell	CHEK-ATF133
Human OX40 (Luc) HEK293 Reporter Cell	CHEK-ATF135
Human IL-2 R beta/IL-2 R gamma (Luc) HEK293 Reporter Cell	CHEK-ATF136
HEK293/Human HVEM Stable Cell Line	CHEK-ATP147
Human IL-23 R/IL-12 R beta 1(Luc) HEK293 Reporter Cell	CHEK-ATF166
Human IL-22 R alpha 1/IL-10 R beta (Luc) HEK293 Reporter Cell	CHEK-ATF167
HEK293/Human CD40 Ligand / TNFSF5 Stable Cell Line	CHEK-ATP041
Human TSHR (Luc) HEK293 Reporter Cell	CHEK-ATF187
Human PTH1R (Luc) HEK293 Reporter Cell	CHEK-ATF194
Human TACI (Luc) HEK293 Reporter Cell	CHEK-ATF197