



Synonym

CTLA4,CD152

Source

Rabbit CTLA-4, His Tag(CT4-R52H4) is expressed from human 293 cells (HEK293). It contains AA Lys 36 - Asp 161 (Accession # [P42072-1](#)).

Predicted N-terminus: Lys 36

Molecular Characterization

CTLA-4(Lys 36 - Asp 161)
P42072-1 Poly-his

This protein carries a polyhistidine tag at the C-terminus.

The protein has a calculated MW of 15.5 kDa.

Endotoxin

Less than 1.0 EU per µg by the LAL method.

Formulation

Lyophilized from 0.22 µm filtered solution in PBS, pH7.4 with trehalose as protectant.

Contact us for customized product form or formulation.

Reconstitution

Please see Certificate of Analysis for specific instructions.

For best performance, we strongly recommend you to follow the reconstitution protocol provided in the CoA.

Storage

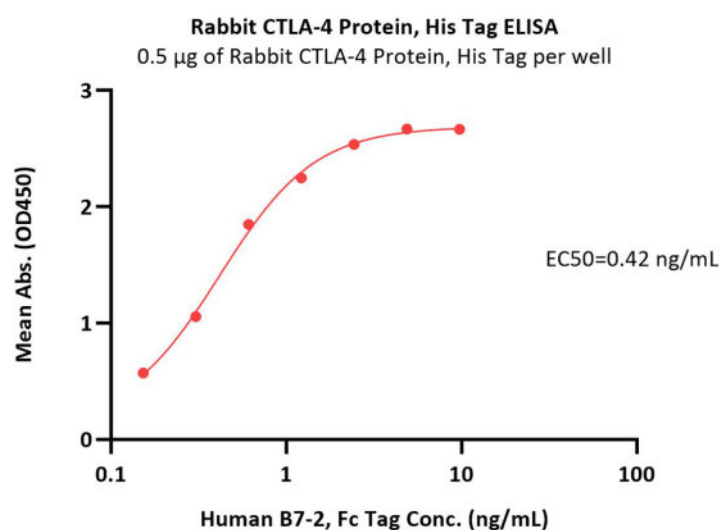
For long term storage, the product should be stored at lyophilized state at -20°C or lower.

Please avoid repeated freeze-thaw cycles.

This product is stable after storage at:

- -20°C to -70°C for 12 months in lyophilized state;
- -70°C for 3 months under sterile conditions after reconstitution.

Bioactivity-ELISA



Immobilized Rabbit CTLA-4, His Tag (Cat. No. CT4-R52H4) at 5 µg/mL (100 µL/well) can bind Human B7-2, Fc Tag (Cat. No. CD6-H5257) with a linear range of 0.2-2 ng/mL (QC tested).

Background

CTLA-4 (Cytotoxic T-Lymphocyte Antigen 4) is also known as CD152 (Cluster of differentiation 152), is a protein receptor that downregulates the immune system. CTLA4 is a member of the immunoglobulin superfamily, which is expressed on the surface of Helper T cells and transmits an inhibitory signal to T cells. The protein contains an extracellular V domain, a transmembrane domain, and a cytoplasmic tail. Alternate splice variants, encoding different isoforms. CTLA4 is similar to the T-cell co-stimulatory protein, CD28, and both molecules bind to CD80 and CD86, also called B7-1 and B7-2 respectively, on antigen-presenting cells. CTLA4

Discounts, Gifts,
and more!



Rabbit CTLA-4 / CD152 Protein, His Tag

Catalog # CT4-R52H4



BIOSYSTEMS
Acro

transmits an inhibitory signal to T cells, whereas CD28 transmits a stimulatory signal. Intracellular CTLA4 is also found in regulatory T cells and may be important to their function. Fusion proteins of CTLA4 and antibodies (CTLA4-Ig) have been used in clinical trials for rheumatoid arthritis.

Clinical and Translational Updates

Discounts, Gifts,
and more!



➤ www.acrobiosystems.com

4/29/2024