

Synonym

EDNRB, endothelin receptor type B, ABCDS, ET-B, ET-BR, ETB, ETB1, ETBR, ETRB, HSCR, HSCR2, WS4A

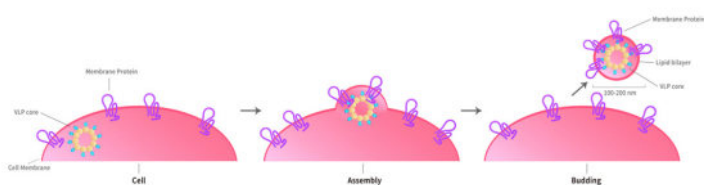
Source

Human EDNRB Full Length Protein-VLP (EDB-H52P7) is expressed from human 293 cells (HEK293). It contains AA Glu 27 - Ser 442 (Accession # [P24530-1](#)).

Predicted N-terminus: Asp

Molecular Characterization

Virus-like particles (VLPs) are formed by self-assembly of envelop/capsid proteins from viruses. Membrane Proteins can be constituted in-situ with VLPs produced from HEK293 cell cultures. These VLPs concentrate conformationally intact membrane proteins directly on the cell surface and produce soluble, high-concentration proteins perfect for immunization and antibody screening.



The VLPs provide the display of properly folded membrane proteins in their native cellular membrane in a compact size of 100~300 nm diameter (similar to the size of most viruses) making it optimal targets for dendritic cells in vivo and surface attachment for phage display.

Endotoxin

Less than 1.0 EU per μg by the LAL method.

Formulation

The VLPs are highly immunogenic, so the immunization strategy should be optimized (antigen dose, regimen and adjuvant).

Supplied as 0.2 μm filtered solution in PBS, Arginine, pH7.4 with trehalose as protectant.

Contact us for customized product form or formulation.

Shipping

This product is supplied and shipped as sterile liquid solution with dry ice, please inquire the shipping cost.

Storage

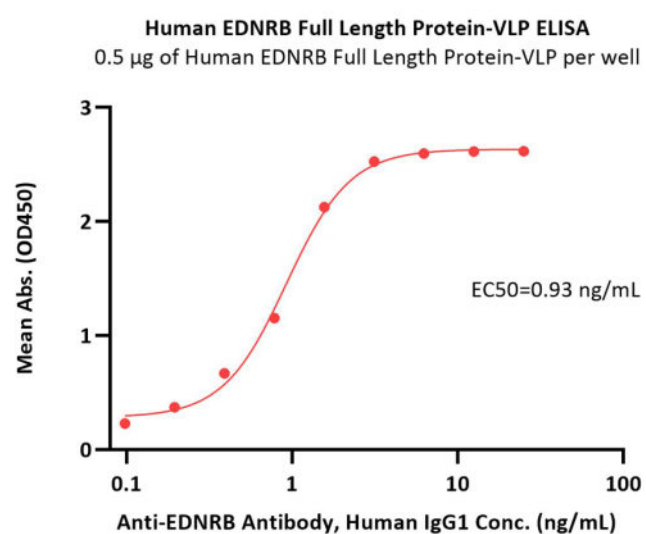
Please avoid repeated freeze-thaw cycles.

This product is stable after storage at:

- The product MUST be stored at -70°C or lower upon receipt;
- -70°C for 12 months under sterile conditions.

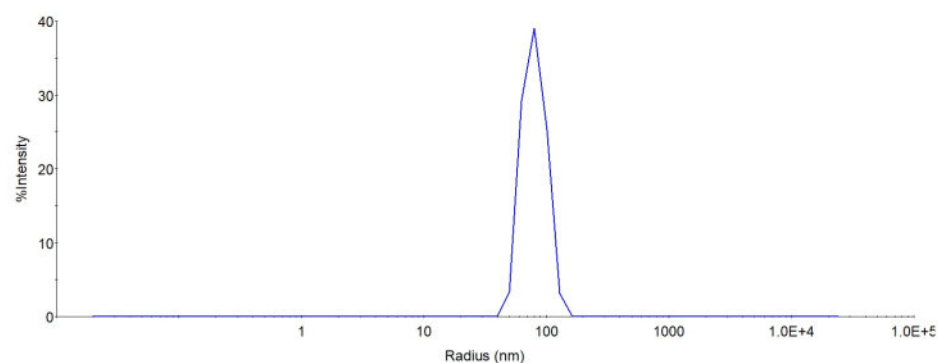
*The isotype control of empty/mock VLP (Cat. No. [VLP-N5213](#)) is sold separately and not included in protein, you can follow [this link](#) for product information.

Bioactivity-ELISA



Immobilized Human EDNRB Full Length Protein-VLP (Cat. No. EDB-H52P7) at 5 $\mu\text{g}/\text{mL}$ (100 $\mu\text{L}/\text{well}$) can bind Anti-EDNRB Antibody, Human IgG1 with a linear range of 0.1-2 ng/mL (QC tested).

Identity-DLS



The mean peak Radius of VLP is 65-85 nm with more than 95% intensity as determined by dynamic light scattering (DLS).

Background

Endothelin Receptor B (EDNRB) is a type of G protein-coupled Receptor with the N-terminus located outside the cell. It's widespread in the human body. EDNRB binds to ET and transmits information into the cell through the intracellular Ca^{2+} phospholipid-dependent protein kinase second messenger system, which promotes the rapid release of calcium in the endoplasmic reticulum and sarcoplasmic reticulum, resulting in the rapid increase of intracellular calcium concentration.

Endothelin exerts its biological effects through its receptor (ETR). Endothelin and ETR constitute the endothelin axis. Endothelin axis has pro-tumor effects in various tumors including malignant melanoma (MM), including promoting tumor growth, anti-apoptosis, promoting angiogenesis and promoting tumor metastasis.

Clinical and Translational Updates

Please contact us via TechSupport@acrobiosystems.com if you have any question on this product.