

# Mouse Gastrin-71 Protein, Fc tag

Catalog # GAN-M5253



BIOSYSTEMS  
**Acro**  
Surprise Inside!

## Synonym

Gastrin-71, Gastrin, GAST, Gastrin component

## Source

Mouse Gastrin-71 Protein, Fc tag (GAN-M5253) is expressed from human 293 cells (HEK293). It contains AA Ser 22 - Phe 92 (Accession # [P48757-1](#)).

Predicted N-terminus: Ser 22

## Molecular Characterization

GAST(Ser 22 - Phe 92) P48757-1	Fc(Pro 100 - Lys 330) P01857
-----------------------------------	---------------------------------

This protein carries a human IgG1 Fc tag at the C-terminus.

The protein has a calculated MW of 34.7 kDa. The protein migrates as 40-45 kDa and 50-65 kDa under reducing (R) condition (SDS-PAGE) due to glycosylation.

## Endotoxin

Less than 1.0 EU per  $\mu\text{g}$  by the LAL method.

## Purity

>90% as determined by SDS-PAGE.

## Formulation

Lyophilized from 0.22  $\mu\text{m}$  filtered solution in PBS, 0.2 M Arginine, pH7.4 with trehalose as protectant.

Contact us for customized product form or formulation.

## Reconstitution

Please see Certificate of Analysis for specific instructions.

*For best performance, we strongly recommend you to follow the reconstitution protocol provided in the CoA.*

## Storage

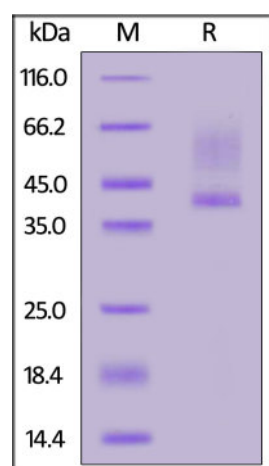
For long term storage, the product should be stored at lyophilized state at  $-20^{\circ}\text{C}$  or lower.

*Please avoid repeated freeze-thaw cycles.*

This product is stable after storage at:

- $-20^{\circ}\text{C}$  to  $-70^{\circ}\text{C}$  for 12 months in lyophilized state;
- $-70^{\circ}\text{C}$  for 3 months under sterile conditions after reconstitution.

## SDS-PAGE



Mouse Gastrin-71 Protein, Fc tag on SDS-PAGE under reducing (R) condition.

The gel was stained with Coomassie Blue. The purity of the protein is greater than 90%.

## Background

Gastrin is a peptide hormone that stimulates secretion of gastric acid (HCl) by the parietal cells of the stomach and aids in gastric motility. It is released by G cells in the pyloric antrum of the stomach, duodenum, and the pancreas. Gastrin binds to cholecystinin B receptors to stimulate the release of histamines in enterochromaffin-like cells, and it induces the insertion of  $\text{K}^+/\text{H}^+$  ATPase pumps into the apical membrane of parietal cells (which in turn increases  $\text{H}^+$  release into the stomach cavity). Its release is stimulated by peptides in the lumen of the stomach.

Discounts, Gifts,  
and more!



➤ [www.acrobiosystems.com](http://www.acrobiosystems.com)

2/10/2025

# Mouse Gastrin-71 Protein, Fc tag

Catalog # GAN-M5253



## Clinical and Translational Updates

Discounts, Gifts,  
and more!



[www.acrobiosystems.com](http://www.acrobiosystems.com)