



**Source**

Monoclonal Anti-HA (Influenza A/Darwin/9/2021 (H3N2)) Antibody, Mouse IgG1 (1D6) is a Mouse monoclonal antibody produced from a hybridoma created by fusing SP2/0 myeloma and Mouse B-lymphocytes.

**Clone**

1D6

**Species**

Mouse

**Isotype**

Mouse IgG1 | Mouse Kappa

**Conjugate**

Unconjugated

**Antibody Type**

Hybridoma Monoclonal

**Reactivity**

Virus

**Immunogen**

Recombinant Influenza A [A/Darwin/9/2021 (H3N2)] HA Protein is expressed from human 293 cells.

**Specificity**

Specifically recognizes HA (Influenza A/Darwin/9/2021 (H3N2)).

**Application**

Application	Recommended Usage
ELISA	0.4-100 ng/mL

**Cross Verification**

This product No cross-reactivity in ELISA with  
 Influenza A [Victoria/4897/2022] Hemagglutinin (HA) Protein, His Tag (Cat. No. HA1-V52H8).  
 Influenza A [Wisconsin/67/2022] Hemagglutinin (HA) Protein, His Tag (Cat. No. HA1-V52H7).  
 Influenza A [A/Hong Kong/483/97 (H5N1)] HA, His Tag (Cat. No. HA1-V5229).  
 Influenza A (Vietnam/1194/2004(H5N1)) Hemagglutinin (HA) Protein, His Tag (Cat. No. HA1-V52H9).  
 Influenza A (Guangdong/18SF020(H5N6)) Hemagglutinin (HA) Protein, His Tag (Cat. No. HA6-V52H3).  
 Influenza A (turkey/Germany-MV/R2472/2014(H5N8)) HA Protein, His Tag (Cat. No. HA8-V52H3).  
 Influenza A (A/Shanghai/02/2013(H7N9)) Hemagglutinin (HA) Protein, His Tag (Cat. No. HA9-V52H3).  
 Influenza B [Phuket/3073/2013 (B/Yamagata lineage)] HA Protein, His Tag (Cat. No. HAE-V52H4).

**Purity**

>95% as determined by SDS-PAGE.

**Purification**

Protein A purified/ Protein G purified

**Formulation**

Lyophilized from 0.22 µm filtered solution in PBS, pH7.0 with trehalose as protectant.

Contact us for customized product form or formulation.

**Reconstitution**

Please see Certificate of Analysis for specific instructions.

*For best performance, we strongly recommend you to follow the reconstitution protocol provided in the CoA.*

**Storage**

For long term storage, the product should be stored at lyophilized state at -20°C or lower.

*Please avoid repeated freeze-thaw cycles.*

This product is stable after storage at:

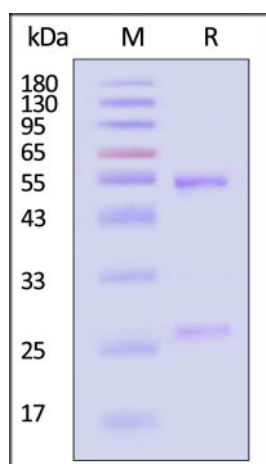
- -20°C to -70°C for 12 months in lyophilized state;
- -70°C for 3 months under sterile conditions after reconstitution.

Discounts, Gifts,  
and more!





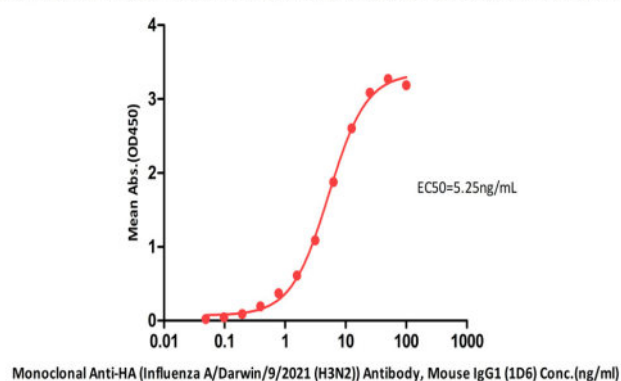
### SDS-PAGE



Monoclonal Anti-HA (Influenza A/Darwin/9/2021 (H3N2)) Antibody, Mouse IgG1 (1D6) on SDS-PAGE under reducing (R) condition. The gel was stained with Coomassie Blue. The purity of the protein is greater than 95% (With [Star Ribbon Pre-stained Protein Marker](#)).

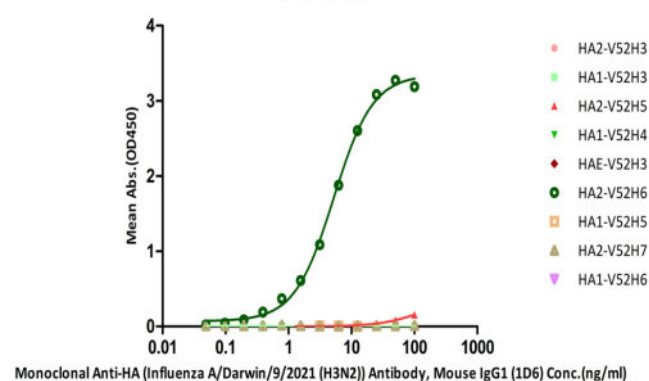
### Bioactivity-ELISA

Monoclonal Anti-HA (Influenza A/Darwin/9/2021 (H3N2)) Antibody, Mouse IgG1 (1D6) ELISA  
0.2 μg of Influenza A [A/Darwin/9/2021 (H3N2)] Hemagglutinin (HA) Protein, His Tag (MALS verified) per well



Immobilized Influenza A [A/Darwin/9/2021 (H3N2)] Hemagglutinin (HA) Protein, His Tag (MALS verified) (Cat. No. HA2-V52H6) at 2 μg/mL (100 μL/well) can bind Monoclonal Anti-HA (Influenza A/Darwin/9/2021 (H3N2)) Antibody, Mouse IgG1 (1D6) (Cat. No. HA2-Y196) with a linear range of 0.195-6.25 ng/mL (QC tested).

Detection of Monoclonal Anti-HA (Influenza A/Darwin/9/2021 (H3N2)) Antibody, Mouse IgG1 (1D6) by ELISA Assay



Immobilized Influenza A [A/Darwin/9/2021 (H3N2)] Hemagglutinin (HA) Protein, His Tag (MALS verified) (Cat. No. HA2-V52H6) can bind Monoclonal Anti-HA (Influenza A/Darwin/9/2021 (H3N2)) Antibody, Mouse IgG1 (1D6) (Cat. No. HA2-Y196). The antibody does not bind Influenza A [A/Bangkok/1/1979 (H3N2)] Hemagglutinin (HA) Protein, His Tag (MALS verified) (Cat. No. HA2-V52H3), Influenza A [A/Wisconsin/588/2019 (H1N1)] Hemagglutinin (HA) Protein, His Tag (MALS verified) (Cat. No. HA1-V52H3), Influenza A [A/Darwin/6/2021 (H3N2)] Hemagglutinin (HA) Protein, His Tag (MALS verified) (Cat. No. HA2-V52H5), Influenza A [Sydney/5/2021 (H1N1)] Hemagglutinin (HA) Protein, His Tag (MALS verified) (Cat. No. HA1-V52H4), Influenza B [Austria/1359417/2021 (B/Victoria lineage)] Hemagglutinin (HA) Protein, His Tag (Cat. No. HAE-V52H3), Influenza A [A/guinea fowl/Hong Kong/WF10/99(H9N2)] Hemagglutinin 1 (HA1) Protein, His Tag (MALS verified) (Cat. No. HA1-V52H5), Influenza A [A/guinea fowl/Hong Kong/WF10/99(H9N2)] Hemagglutinin (HA) Protein, His Tag (MALS verified) (Cat. No. HA2-V52H7) and Influenza A [A/Victoria/2570/2019] Hemagglutinin (HA) Protein, His Tag (MALS verified) (Cat. No. HA1-V52H6). (Routinely tested).

Discounts, Gifts,  
and more!





## Background

Influenza, commonly known as 'the flu', is an infectious disease of birds and mammals caused by RNA viruses of the family Orthomyxoviridae, the influenza viruses. The virus is divided into three main types (Influenzavirus A, Influenzavirus B, and Influenzavirus C), which are distinguished by differences in two major internal proteins (hemagglutinin (HA) and neuraminidase (NA)), which are the most important targets for the immune system. Hemagglutinin binds to the sialic acid-containing receptors on the surface of host cells during initial infection and at the end of an infectious cycle which makes it a great target for vaccine studies.

## Clinical and Translational Updates

Discounts, Gifts,  
and more!

