



## Background

CD20 is expressed on the surface of B cells at all stages of development and differentiation except plasma cells (B cells secreting immunoglobulin). It directly acts on B cells by regulating transmembrane calcium ion flow and plays an important regulatory role in the proliferation and differentiation of B cells.

## Host Species

Mouse

## Clone

6C8

## Application

IHC

## Property

1: 500

## State

Liquid

## Positive Control

Human Tonsil Tissues

## Clonality

Monoclonal

## Synonym

CD20

## Research Field

Cancer Drug Targets

## Source

Mouse

## Isotype

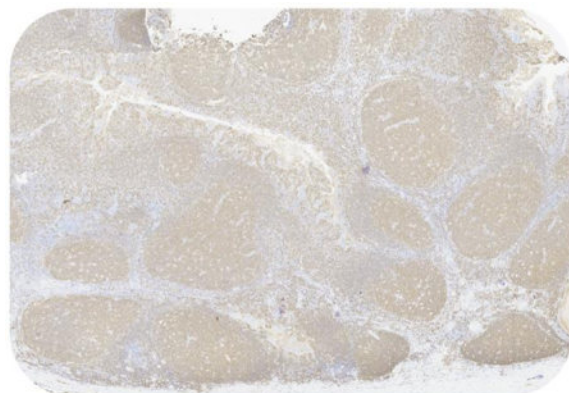
IgG

## Storage

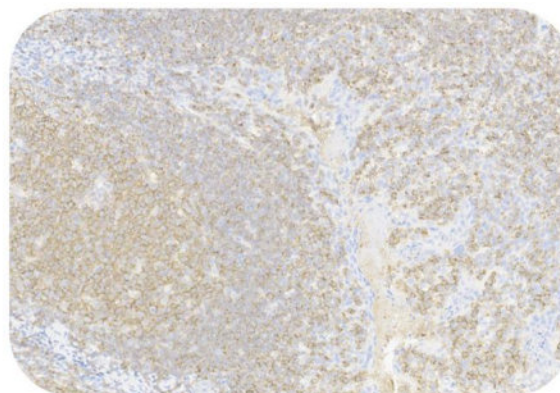
Shipped at 4°C. Store at +4°C short term (1-2 weeks). Upon delivery aliquot. Store at -20°C long term. Avoid freeze / thaw cycle.

## Typical Data

### Control Sample



Immunohistochemistry (Formalin/PFA-fixed paraffin-embedded sections) -Recombinant Monoclonal Anti-CD20 Antibody, Mouse (6C8) (HGS-S241)  
Human Tonsil Tissue, 4X



Immunohistochemistry (Formalin/PFA-fixed paraffin-embedded sections) -Recombinant Monoclonal Anti-CD20 Antibody, Mouse (6C8) (HGS-S241)  
Human Tonsil Tissue, 20X

Immunohistochemical analysis of paraffin embedded Human tonsil tissue labelled with HGS-S241 at 1/500 dilution. Perform heat mediated antigen retrieval with Tris/EDTA buffer pH 9.0 before commencing with IHC staining protocol.

### Cancer Sample

Discounts, Gifts,  
and more!

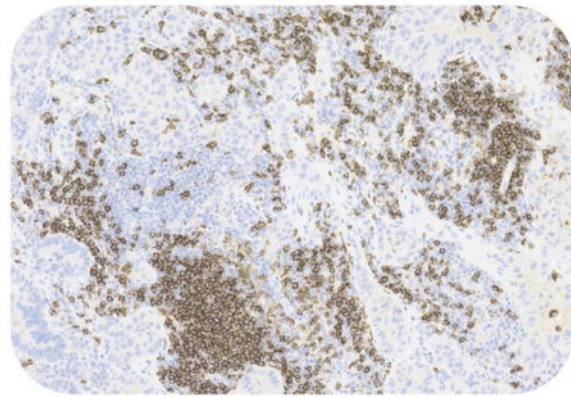


# Recombinant Monoclonal Anti-CD20 Antibody, Mouse (6C8)

Catalog # HGS-S241

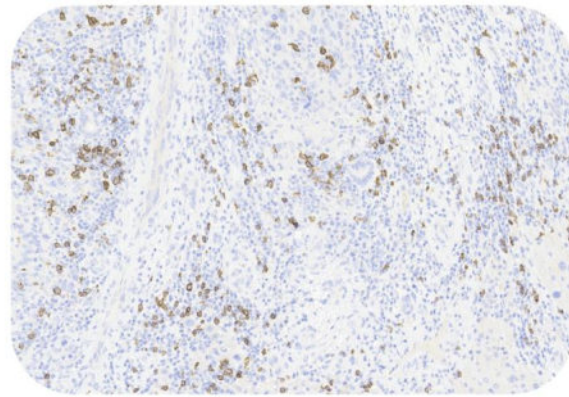


BIOSYSTEMS  
**Acro**



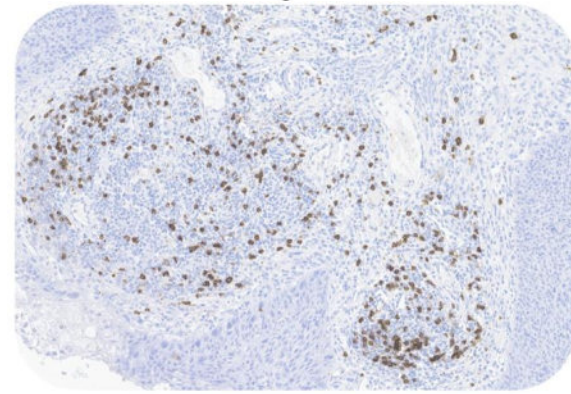
Immunohistochemistry (Formalin/PFA-fixed paraffin-embedded sections) -Recombinant Monoclonal Anti-CD20 Antibody, Mouse (6C8) (HGS-S241)

Human Lung Cancer, 20X



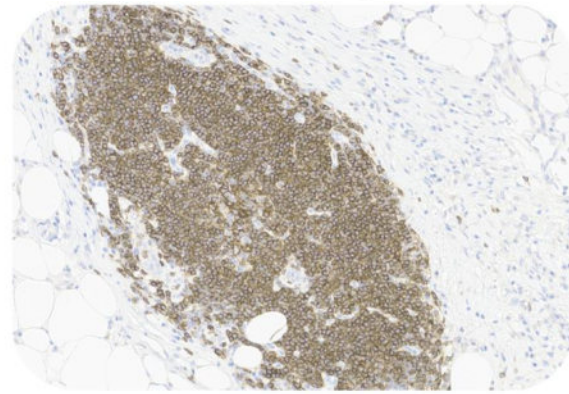
Immunohistochemistry (Formalin/PFA-fixed paraffin-embedded sections) -Recombinant Monoclonal Anti-CD20 Antibody, Mouse (6C8) (HGS-S241)

Human Liver Cancer, 20X



Immunohistochemistry (Formalin/PFA-fixed paraffin-embedded sections) -Recombinant Monoclonal Anti-CD20 Antibody, Mouse (6C8) (HGS-S241)

Human Cervical Cancer, 20X



Immunohistochemistry (Formalin/PFA-fixed paraffin-embedded sections) -Recombinant Monoclonal Anti-CD20 Antibody, Mouse (6C8) (HGS-S241)

Human Colorectal Cancer, 20X

Immunohistochemical analysis of paraffin embedded human cancer tissue labelled with HGS-S241 at 1/500 dilution.  
Perform heat mediated antigen retrieval with Tris/EDTA buffer pH 9.0 before commencing with IHC staining protocol.

## Clinical and Translational Updates

Please contact us via [TechSupport@acrobiosystems.com](mailto:TechSupport@acrobiosystems.com) if you have any question on this product.

Discounts, Gifts,  
and more!



➤ [www.acrobiosystems.com](http://www.acrobiosystems.com)

10/27/2023