

Synonym

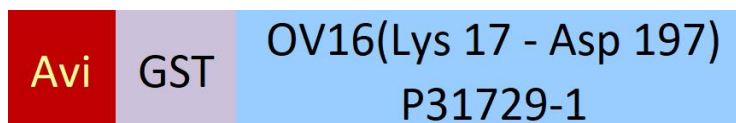
OV16,OV-16 antigen

Source

Biotinylated Onchocerca volvulus OV16 protein, Avi,GST Tag(OV6-V81G9) is expressed from E.coli cells. It contains AA Lys 17 - Asp 197 (Accession # [P31729-1](#)).

Predicted N-terminus: Met

Molecular Characterization



This protein carries an Avi tag (Avitag™) at the N-terminus, followed by a GST tag

The protein has a calculated MW of 48.6 kDa. The protein migrates as 46-50 kDa under reducing (R) condition (SDS-PAGE) .

Labeling

Biotinylation of this product is performed using Avitag™ technology. Briefly, the single lysine residue in the Avitag is enzymatically labeled with biotin.

Protein Ratio

Passed as determined by the HABA assay / binding ELISA.

Endotoxin

Less than 1.0 EU per µg by the LAL method.

Purity

>95% as determined by SDS-PAGE.

>90% as determined by SEC-MALS.

Formulation

Lyophilized from 0.22 µm filtered solution in PBS, pH7.4 with trehalose as protectant.

Contact us for customized product form or formulation.

Reconstitution

Please see Certificate of Analysis for specific instructions.

For best performance, we strongly recommend you to follow the reconstitution protocol provided in the CoA.

Storage

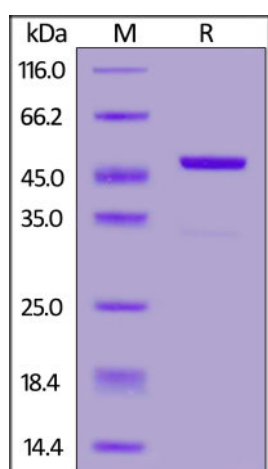
For long term storage, the product should be stored at lyophilized state at -20°C or lower.

Please avoid repeated freeze-thaw cycles.

This product is stable after storage at:

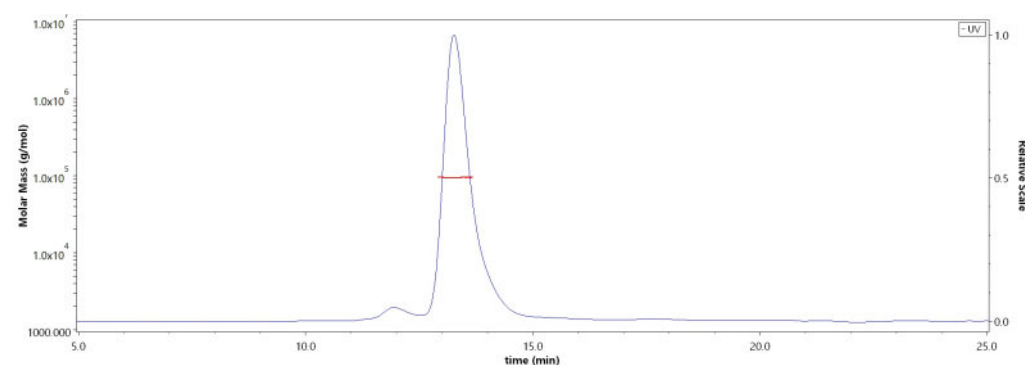
- -20°C to -70°C for 12 months in lyophilized state;
- -70°C for 3 months under sterile conditions after reconstitution.

SDS-PAGE



Biotinylated Onchocerca volvulus OV16 protein, Avi,GST Tag on SDS-PAGE under reducing (R) condition. The gel was stained overnight with Coomassie Blue. The purity of the protein is greater than 95%.

SEC-MALS



The purity of Biotinylated Onchocerca volvulus OV16 protein, Avi,GST Tag (Cat. No. OV6-V81G9) is more than 90% and the molecular weight of this protein is around 90-105 kDa verified by SEC-MALS.

[Report](#)

Background

The OV16 antigen, localizes to the hypodermis, cuticle, and uterus of female *O. volvulus* is regarded as a highly sensitive and specific antigen for detection of IgG4 in people with prior exposure to onchocerciasis. It has an open reading frame that encodes a 152- amino acid polypeptide containing a 16-amino acid putative signal peptide. Enzyme-linked Immunosorbent Assay serological testing of OV-16 antigen is a diagnostic tool for determining effective elimination of the parasite.

Clinical and Translational Updates

Please contact us via TechSupport@acrobiosystems.com if you have any question on this product.