

**Synonym**

SCARB1,CD36L1,SRB1,CLA-1,SR-BI,HDLQTL6

**Source**

Human SCARB1, Fc Tag (SC1-H5258) is expressed from human 293 cells (HEK293). It contains AA Pro 33 - Tyr 443 (Accession # [NP\\_005496.4](#)).

Predicted N-terminus: Pro 33

**Molecular Characterization**

SCARB1(Pro 33 - Tyr 443) NP_005496.4	Fc(Glu 99 - Lys 330) P01857
---	--------------------------------

This protein carries a human IgG1 Fc tag at the C-terminus.

The protein has a calculated MW of 72.7 kDa. The protein migrates as 75-100 kDa under reducing (R) condition (SDS-PAGE) due to glycosylation.

**Endotoxin**

Less than 1.0 EU per  $\mu\text{g}$  by the LAL method.

**Purity**

>95% as determined by SDS-PAGE.

**Formulation**

Lyophilized from 0.22  $\mu\text{m}$  filtered solution in 50 mM Tris, 100 mM Glycine, pH7.5. Normally trehalose is added as protectant before lyophilization.

Contact us for customized product form or formulation.

**Reconstitution**

Please see Certificate of Analysis for specific instructions.

*For best performance, we strongly recommend you to follow the reconstitution protocol provided in the CoA.*

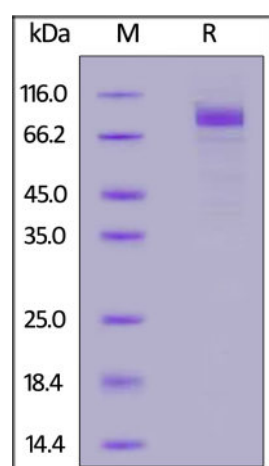
**Storage**

For long term storage, the product should be stored at lyophilized state at  $-20^{\circ}\text{C}$  or lower.

*Please avoid repeated freeze-thaw cycles.*

This product is stable after storage at:

- $-20^{\circ}\text{C}$  to  $-70^{\circ}\text{C}$  for 12 months in lyophilized state;
- $-70^{\circ}\text{C}$  for 3 months under sterile conditions after reconstitution.

**SDS-PAGE**

Human SCARB1, Fc Tag on SDS-PAGE under reducing (R) condition. The gel was stained overnight with Coomassie Blue. The purity of the protein is greater than 95%.

**Background**

Scavenger receptor class B member 1 (SRB1) is also known as SR-BI, CD36 and LIMPII analogous 1 (CD36L1), CLA-1, is a member of the scavenger receptor family or CD36 family. CD36L1 is an integral membrane protein found in numerous cell types/tissues, including the liver and adrenal. SRB1 is receptor for different ligands such as phospholipids, cholesterol ester, lipoproteins, phosphatidylserine and apoptotic cells. CLA-1 facilitates the flux of free and esterified cholesterol between the cell surface and extracellular donors and acceptors, such as high-density lipoprotein (HDL) and to a lesser extent, apoB-containing lipoproteins and modified lipoproteins. SCARB1 is, along with CD81, the receptor for the entry of the Hepatitis C virus glycoprotein E2 in liver cells, and binding between SCARB1 and E2 was found to be independent of the genotype of the viral isolate. SRB1 plays an important role in the uptake of HDL cholesteryl ester.

### Clinical and Translational Updates

Please contact us via [TechSupport@acrobiosystems.com](mailto:TechSupport@acrobiosystems.com) if you have any question on this product.