

Human STEAP1 Full Length Protein, Twin-Strep,His Tag (Detergent)

Catalog # ST1-H5283



BIOSYSTEMS
Acro
Surprise Inside!

Synonym

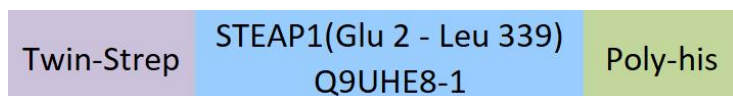
STEAP1, PRSS24, STEAP

Source

Human STEAP1 Full Length Protein, Twin-Strep,His Tag(ST1-H5283) is expressed from human 293 cells (HEK293). It contains AA Glu 2 - Leu 339 (Accession # [Q9UHE8-1](#)).

Predicted N-terminus: Met

Molecular Characterization



This protein carries a twin strep tag at the N-terminus and a polyhistidine tag at the C-terminus.

The protein has a calculated MW of 44.7 kDa. The protein migrates as 38 kDa, 65 kDa and 95 kDa when calibrated against [Star Ribbon Pre-stained Protein Marker](#) under reducing (R) condition (SDS-PAGE) due to glycosylation.

Endotoxin

Less than 1.0 EU per µg by the LAL method.

Purity

>90% as determined by SDS-PAGE.

Formulation

This product is not suitable for cell based experiments due to cytotoxicity of DDM.

DDM and CHS are INDISPENSABLE to keep membrane protein soluble and active, under no circumstance should you remove DDM and CHS.

DDM/CHS buffer (DC-11) is sold separately and not included in protein, and please contact us if you need the buffer.

If glycerol is not compatible to your application, remove glycerol just before immediate experiment, and NEVER store glycerol-free protein solution.

Supplied as 0.2 µm filtered solution in 50 mM HEPES, 150 mM NaCl, DDM, CHS, pH7.5 with glycerol as protectant.

Contact us for customized product form or formulation.

Shipping

This product is supplied and shipped with dry ice, please inquire the shipping cost.

Storage

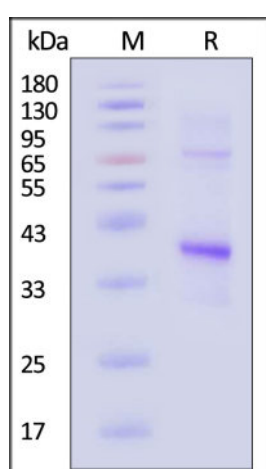
Please avoid repeated freeze-thaw cycles.

This product is stable after storage at:

- The product MUST be stored at -70°C or lower upon receipt;
- -70°C for 3 months under sterile conditions.

**The DDM/CHS buffer (Cat. No. [DC-11](#)) is sold separately and not included in protein, you can follow [this link](#) for product information.

SDS-PAGE



Human STEAP1 Full Length Protein, Twin-Strep,His Tag on SDS-PAGE under reducing (R) condition. The gel was stained with Coomassie Blue. The purity of the protein is greater than 90% (With [Star Ribbon Pre-stained Protein Marker](#)).

Bioactivity-SPR

Discounts, Gifts,
and more!



➤ www.acrobiosystems.com

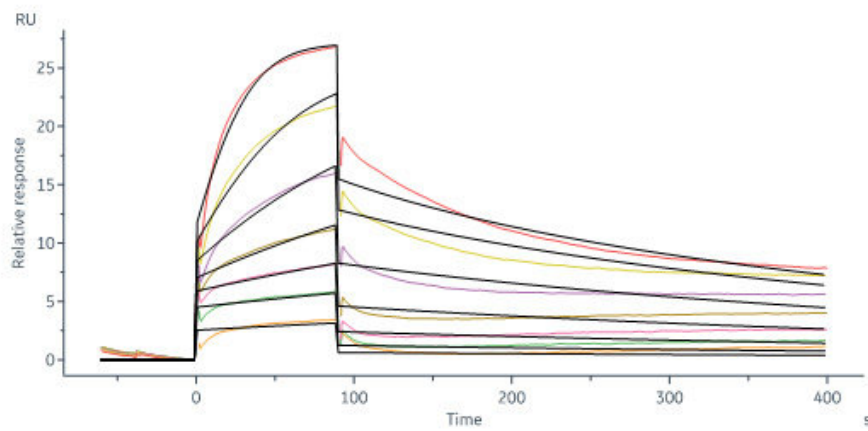
4/17/2024

Human STEAP1 Full Length Protein, Twin-Strep,His Tag (Detergent)

Catalog # ST1-H5283



BIOSYSTEMS
Acro
Surprise Inside!



Human STEAP1 Full Length Protein, Twin-Strep,His Tag (Cat. No. ST1-H5283) captured on CM5 chip via anti-His antibody can bind Anti-STEAP1 Antibody with an affinity constant of 3.43 nM as determined in a SPR assay (in presence of DDM and CHS) (Biacore 8K) (Routinely tested).

Background

Six-transmembrane epithelial antigen of the prostate 1 (STEAP1) is an integral membrane protein that is highly up-regulated on the cell surface of several human cancers, making it a promising therapeutic target to manage these diseases. It shares sequence homology with three enzymes (STEAP2-STEAP4) that catalyze the DPH-dependent reduction of iron(III). Taking into account its high specificity and overexpression in human cancers, STEAP1 is nowadays a promising candidate to be imposed as a therapeutic target.

Clinical and Translational Updates

Discounts, Gifts,
and more!



➤ www.acrobiosystems.com

4/17/2024